

TEST REPORT

APPLICANT : CROMOLOGY, S.L.

ADDRESS : C/ Francia,7 P.I. Pla De Llerona
08520 Les Franqueses Del Valles
España

SAMPLE DESCRIPTION : BRANIZ ALTA RESISTENCIA AL AGUA BRILLANTE BASE TR.

ARTICLE NO. : 8514003

SAMPLE RECEIVED DATE : 19-Dec-2019

TURN AROUND TIME : 19-Dec-2019 to 24-Dec-2019

The following test item(s) was/were performed on submitted sample(s) and/or component(s) confirmed by applicant

TEST REQUESTED	TEST METHOD/REGULATION	RESULT
Migration of Certain Elements	EN71 Part 3:2019	Pass

Samples are obtained by express delivery, Results obtained refer only to samples, products or material received in Laboratory, as described in point related to sample description, and tested in conditions shown in present report. Eurofins Product Testing Service (Shanghai) Co., Ltd ensures that this job has been performed according to our Quality System and complying contract and legal conditions. If you happen to have any comments, please do it by sending email to info.sh@eurofins.com and referring to this report number. Reproduction of this document is only valid if it is done completely and under the written permission of Eurofins Product Testing Service (Shanghai) Co., Ltd. If you happen to have any complaints, please do it by sending email to chinacomplaint@eurofins.com and referring to this report number.

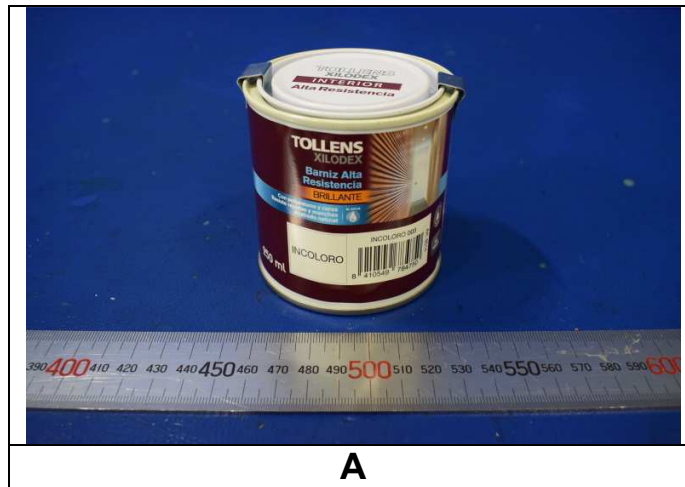
Eurofins (Shanghai) contact information**Customer service:** SammyCao@eurofins.com / 021-36202855

***** FOR FURTHER DETAILS, PLEASE REFER TO THE FOLLOWING PAGE(S) *****

Signed for and on behalf of
Eurofins Product Testing Service (Shanghai) Co., Ltd

Lemon Zhang
Chemical Lab Supervisor

SAMPLE PHOTO



EFSH19121975-CG-01

TO BE CONTINUED

COMPONENT LIST

Component No.	Component	Sample No.
1	BRANIZ ALTA RESISTENCIA AL AGUA BRILLANTE BASE TR.	A

TO BE CONTINUED

TEST RESULT

Migration of Certain Elements

Test Request: Migration of certain elements as specified in European Standard on Safety of Toys EN71 Part 3:2019

Test Method: General elements, with reference to EN 71 Part 3:2019, analysis was performed by ICP-MS;
 Extractable Chromium (VI), with reference to EN 71 Part 3:2019, analysis was performed by IC-ICP-MS;
 Extractable organic tin, with reference to EN 71 Part 3:2019, analysis was performed by GC-MS.

Test Item(s):	Unit	Result
		I
Category Type		II
Extractable Lead (Pb)	mg/kg	ND
Extractable Antimony (Sb)	mg/kg	ND
Extractable Arsenic (As)	mg/kg	ND
Extractable Barium (Ba)	mg/kg	ND
Extractable Cadmium (Cd)	mg/kg	ND
Extractable Mercury (Hg)	mg/kg	ND
Extractable Selenium (Se)	mg/kg	ND
Extractable Boron (B)	mg/kg	ND
Extractable Cobalt (Co)	mg/kg	ND
Extractable Manganese (Mn)	mg/kg	ND
Extractable Strontium (Sr)	mg/kg	ND
Extractable Zinc (Zn)	mg/kg	ND
Extractable Copper (Cu)	mg/kg	ND
Extractable Aluminum (Al)	mg/kg	ND
Extractable Nickel (Ni)	mg/kg	ND
Extractable Tin (Sn)	mg/kg	ND
Extractable Organic Tin ^{#1}	mg/kg	ND
Extractable Chromium ^{#2}	mg/kg	ND
Extractable Chromium (III) (Cr III) ^{#3}	mg/kg	-
Extractable Chromium (VI) (Cr VI)	mg/kg	-

Note:

- #1 - Result of Organic Tin is calculated by assuming the extractable Tin content is wholly contributed from tributyltin (TBT) cation unless further specified.
- #2 - If the migration of total Chromium is below the maximum limit for Chromium (VI), it can be inferred that the material complies with the requirements for both Chromium(III) and Chromium(VI).
- #3 - In particular Chromium (III) is calculated by subtracting the Chromium (VI) concentration from the total chromium concentration.

Remarks:

mg/kg = milligram per kilogram
 MDL = Method Detection Limit
 ND = Not Detected, less than MDL

TO BE CONTINUED

TEST RESULT

Limits –MDL per category type:

Test Item(s):	Unit	Limit	MDL	Limit	MDL	Limit	MDL
Category Type		I		II		III	
Extractable Lead (Pb)	mg/kg	2.0	1.0	0.5	0.2	23	10
Extractable Antimony (Sb)	mg/kg	45	5	11.3	1	560	10
Extractable Arsenic (As)	mg/kg	3.8	0.2	0.9	0.1	47	5
Extractable Barium (Ba)	mg/kg	1500	50	375	10	18750	50
Extractable Cadmium (Cd)	mg/kg	1.3	0.1	0.3	0.05	17	1
Extractable Mercury (Hg)	mg/kg	7.5	0.5	1.9	0.2	94	10
Extractable Selenium (Se)	mg/kg	37.5	2	9.4	1	460	10
Extractable Boron (B)	mg/kg	1200	50	300	10	15000	50
Extractable Cobalt (Co)	mg/kg	10.5	1	2.6	0.2	130	10
Extractable Manganese (Mn)	mg/kg	1200	50	300	10	15000	50
Extractable Strontium (Sr)	mg/kg	4500	50	1125	50	56000	50
Extractable Zinc (Zn)	mg/kg	3750	50	938	50	46000	50
Extractable Copper (Cu)	mg/kg	622.5	10	156	10	7700	50
Extractable Aluminum (Al)	mg/kg	5625	50	1406	50	70000	50
Extractable Nickel (Ni)	mg/kg	75	5	18.8	2	930	10
Extractable Tin (Sn)	mg/kg	15000	50	3750	50	180000	50
Extractable Organic Tin	mg/kg	0.9	0.2	0.2	0.2	12	0.2
Extractable Chromium	mg/kg	-	0.02	-	0.005	-	0.02
Extractable Chromium (III) (Cr III)	mg/kg	37.5	2	9.4	1	460	10
Extractable Chromium (VI) (Cr VI)	mg/kg	0.02	0.02	0.005	0.005	0.053	0.02

Category I: dry, brittle, powder-like or pliable toy material

Category II: liquid or sticky toy material

Category III: scrapped-off toy material

“-” = Not Regulated

END OF THE REPORT